



NORTH BAY MEMORIAL GARDENS
SPORTS ARENA
100 CHIPPEWA ST. W.
NORTH BAY, ON
P1B 6G2

Technical Package (2010)

NORTH BAY MEMORIAL GARDENS SPORTS ARENA



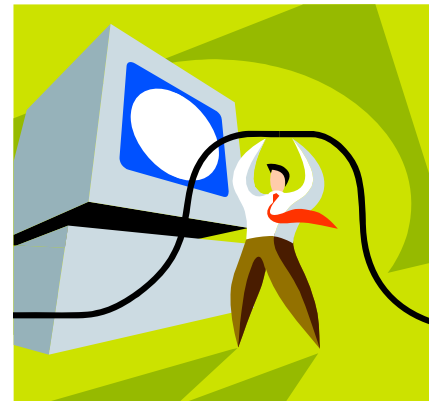
Technical Specifications

Ceiling Height	34 ft. (low) 49 ft. (high)
Floor Area Floor Size	17,100 sq ft 90 x 190
Floor Type	Concrete/ Wood
Loading Doors	
Portable Stage	32 x 60 (max)
Lighting	
Seating Capacity	4048



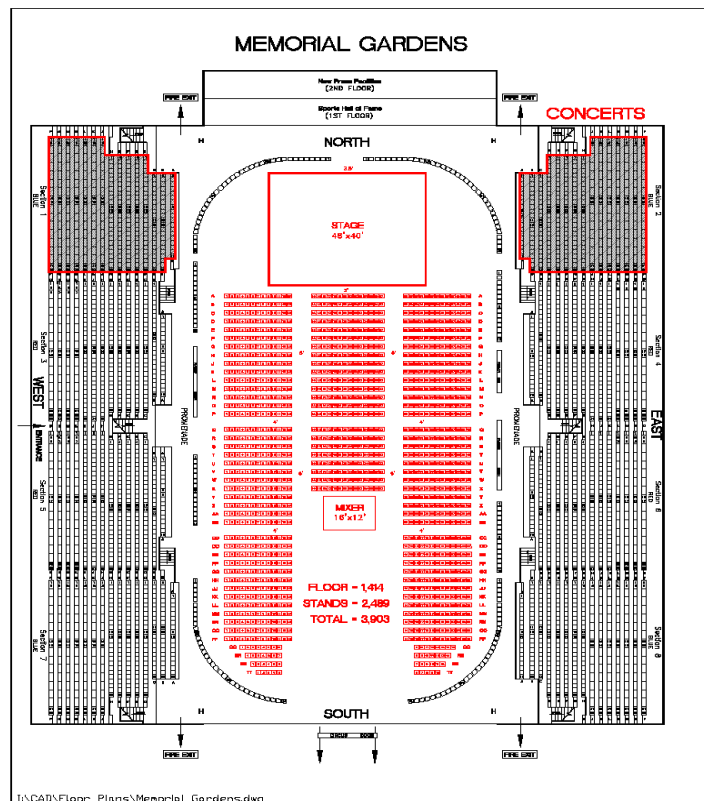
ELECTRICAL and INFORMATION TECHNOLOGY INFORMATION

- Internet access
- Wireless capabilities
- Electrical

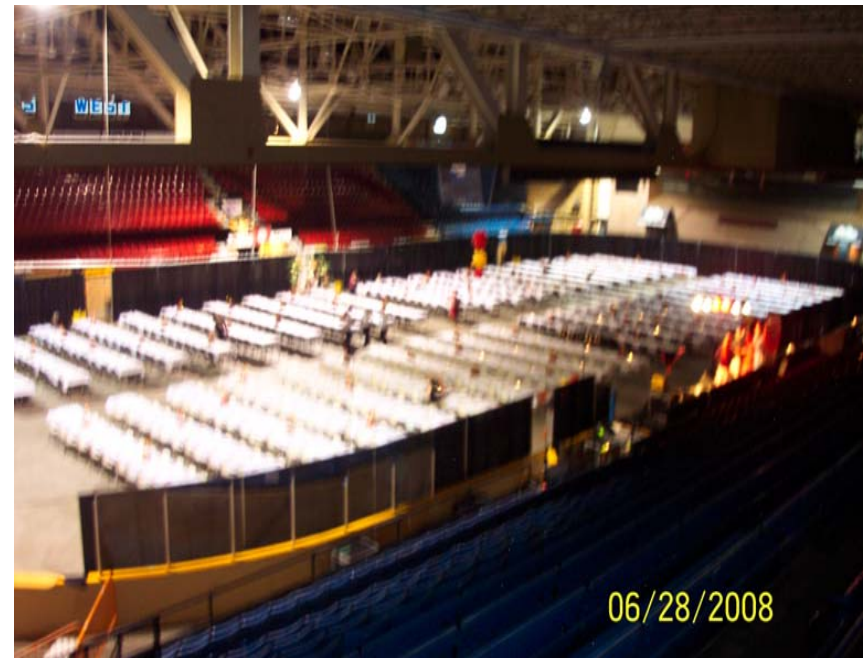


Arena Seating

- Building Capacity 4048
- Regular Seats
- Handicapped seating (rails) 200
- Floor seating:
 - Concert standing
 - Concert seating
 - Banquet



BANQUET SEATING



ARENA SEATING

- 4048 building capacity
- 3582 seats
- 200 handicapped rail seats



ROOMS



- Super Suite holds 60 people with a view overlooking the ice surface. 2nd Floor location.
- North Bay Sports Hall of Fame holds 60 people, ramp access. Equipped with small kitchen and bar operation.

Arena Rigging Weight



High Steel Clearance: 49 ft.

Low Steel Clearance: 34 ft.

ARENA AMENITIES

- Box office services (includes ticket production, ticket sellers, credit card services)
- On site A.T.M.
- Arena security
- Police services (upon request)
- Stage
- Forklift
- Towels
- Glass in/out

Food Services

- Concessions currently operated by the Nipissing Lakers

